

Plan No. 18
 Date of Issue 04/18/94
 3500m. Plat Books
 0-18-00-02-007
 81st #06/0266

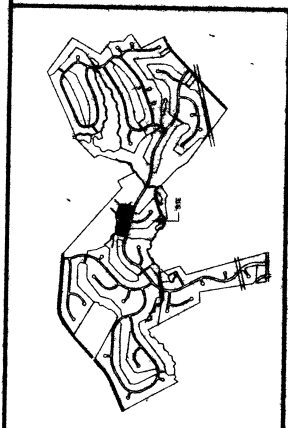
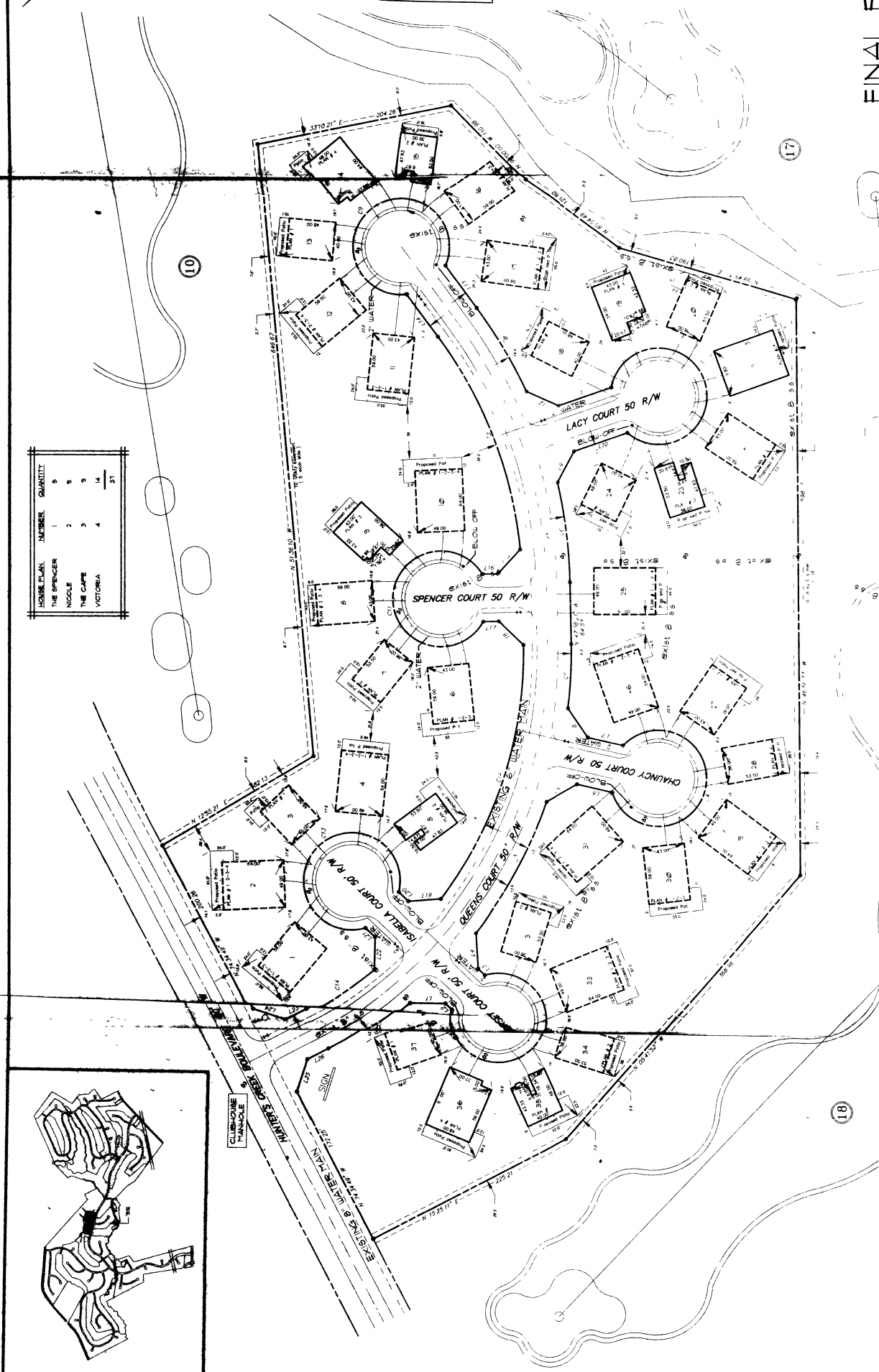
GREENWOOD COUNTY
 GREENWOOD, SOUTH CAROLINA
 THIS PLAT MAY BE RECORDED
 APPROVED BY PLANNING BOARD
 ON April 14, 1994
 BY Spencer R. Spahn - DATE 4/15/94

I, JAMES M. STUBBS, a duly Licensed Professional Engineer in the State of South Carolina, do hereby certify that the above described plat was prepared by me or under my direct supervision and that I am a duly Licensed Professional Engineer in the State of South Carolina.
 I hereby state that to the best of my knowledge and belief the above described plat was prepared in accordance with the Manual for the Practice of Land Surveying in South Carolina, and that the same is a true and correct representation of the facts as shown by the original survey on which it is based.
 JAMES M. STUBBS
 P. O. Box 625
 Mt. Airy, N.C. 28551

FINAL PLAT
EIGHTEEN QUEENS COURT
 (98.3 ACRES)
PATIO HOMES SECTION "I"
 DEVELOPED BY
FUTURE WAVES PARTNERSHIP
 SOUTH CAROLINA
 GREENWOOD COUNTY
 SCALE 1" = 50'
 DATE 2/17/94



HOUSE PLAN	NUMBER	QUANTITY
THE SPENCER	1	8
NICOLE	2	8
THE CAMP	3	9
VICTORIA	4	14
		37



LINE	DESCRIPTION	DISTANCE	BEARING	AREA
1	N. 44.2734° E.	58.72		
2	N. 89.1156° E.	9.49		
3	N. 50.0000° W.	50.00		
4	N. 50.0000° W.	50.00		
5	N. 50.0000° W.	50.00		
6	N. 50.0000° W.	50.00		
7	N. 50.0000° W.	50.00		
8	N. 50.0000° W.	50.00		
9	N. 50.0000° W.	50.00		
10	N. 50.0000° W.	50.00		
11	N. 50.0000° W.	50.00		
12	N. 50.0000° W.	50.00		
13	N. 50.0000° W.	50.00		
14	N. 50.0000° W.	50.00		
15	N. 50.0000° W.	50.00		
16	N. 50.0000° W.	50.00		
17	N. 50.0000° W.	50.00		
18	N. 50.0000° W.	50.00		
19	N. 50.0000° W.	50.00		
20	N. 50.0000° W.	50.00		
21	N. 50.0000° W.	50.00		
22	N. 50.0000° W.	50.00		
23	N. 50.0000° W.	50.00		
24	N. 50.0000° W.	50.00		
25	N. 50.0000° W.	50.00		
26	N. 50.0000° W.	50.00		
27	N. 50.0000° W.	50.00		
28	N. 50.0000° W.	50.00		
29	N. 50.0000° W.	50.00		
30	N. 50.0000° W.	50.00		
31	N. 50.0000° W.	50.00		
32	N. 50.0000° W.	50.00		
33	N. 50.0000° W.	50.00		
34	N. 50.0000° W.	50.00		
35	N. 50.0000° W.	50.00		
36	N. 50.0000° W.	50.00		
37	N. 50.0000° W.	50.00		
38	N. 50.0000° W.	50.00		
39	N. 50.0000° W.	50.00		
40	N. 50.0000° W.	50.00		
41	N. 50.0000° W.	50.00		
42	N. 50.0000° W.	50.00		
43	N. 50.0000° W.	50.00		
44	N. 50.0000° W.	50.00		
45	N. 50.0000° W.	50.00		
46	N. 50.0000° W.	50.00		
47	N. 50.0000° W.	50.00		
48	N. 50.0000° W.	50.00		
49	N. 50.0000° W.	50.00		
50	N. 50.0000° W.	50.00		
51	N. 50.0000° W.	50.00		
52	N. 50.0000° W.	50.00		
53	N. 50.0000° W.	50.00		
54	N. 50.0000° W.	50.00		
55	N. 50.0000° W.	50.00		
56	N. 50.0000° W.	50.00		
57	N. 50.0000° W.	50.00		
58	N. 50.0000° W.	50.00		
59	N. 50.0000° W.	50.00		
60	N. 50.0000° W.	50.00		
61	N. 50.0000° W.	50.00		
62	N. 50.0000° W.	50.00		
63	N. 50.0000° W.	50.00		
64	N. 50.0000° W.	50.00		
65	N. 50.0000° W.	50.00		
66	N. 50.0000° W.	50.00		
67	N. 50.0000° W.	50.00		
68	N. 50.0000° W.	50.00		
69	N. 50.0000° W.	50.00		
70	N. 50.0000° W.	50.00		
71	N. 50.0000° W.	50.00		
72	N. 50.0000° W.	50.00		
73	N. 50.0000° W.	50.00		
74	N. 50.0000° W.	50.00		
75	N. 50.0000° W.	50.00		
76	N. 50.0000° W.	50.00		
77	N. 50.0000° W.	50.00		
78	N. 50.0000° W.	50.00		
79	N. 50.0000° W.	50.00		
80	N. 50.0000° W.	50.00		
81	N. 50.0000° W.	50.00		
82	N. 50.0000° W.	50.00		
83	N. 50.0000° W.	50.00		
84	N. 50.0000° W.	50.00		
85	N. 50.0000° W.	50.00		
86	N. 50.0000° W.	50.00		
87	N. 50.0000° W.	50.00		
88	N. 50.0000° W.	50.00		
89	N. 50.0000° W.	50.00		
90	N. 50.0000° W.	50.00		
91	N. 50.0000° W.	50.00		
92	N. 50.0000° W.	50.00		
93	N. 50.0000° W.	50.00		
94	N. 50.0000° W.	50.00		
95	N. 50.0000° W.	50.00		
96	N. 50.0000° W.	50.00		
97	N. 50.0000° W.	50.00		
98	N. 50.0000° W.	50.00		
99	N. 50.0000° W.	50.00		
100	N. 50.0000° W.	50.00		