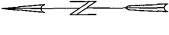
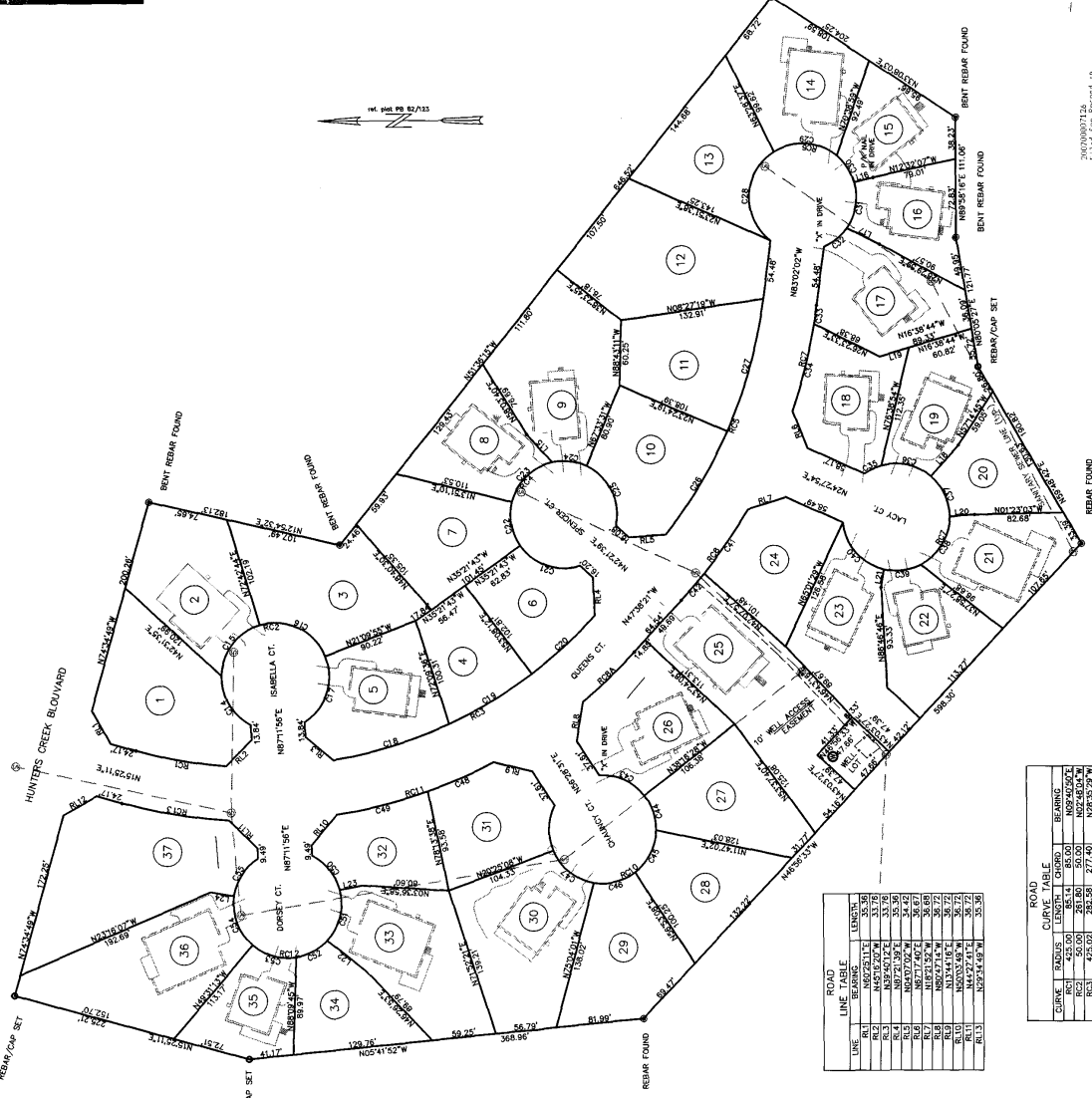




HEANER INCORPORATED
ARCHITECTS ENGINEERS CONTRACTORS
1633 HUNTERS STREET GREENWOOD, SC 29646
(803) 727-2100

PLAT
MADE AT THE REQUEST
OF
HERBERT ANDERSON JR
QUEENS COURT

NO.	DATE	REVISIONS	BY
1	3/28/07	ISSUED	HEANER
2	4/18/07	REVISION	HEANER
3	3/9/07	REVISION	HEANER



3/28/07
Listed for Record of
South Carolina
Plat No. 6-4-07
Recorded
20070308124.132
132
132

DATE: MARCH 8, 2007
SCALE: 1" = 40'
GREENWOOD COUNTY
SOUTH CAROLINA

PLAT
MADE AT THE REQUEST
OF
HERBERT ANDERSON JR
SHOWING
QUEENS COURT



TAX ID NO.	OWNER	SEED	BLK	LOT	TEN
3827-001	HEANER INCORPORATED	100.00	181	62-73	SEAMON
3827-002	HEANER INCORPORATED	100.00	181	62-74	SEAMON
3827-003	HEANER INCORPORATED	100.00	181	62-75	SEAMON
3827-004	HEANER INCORPORATED	100.00	181	62-76	SEAMON
3827-005	HEANER INCORPORATED	100.00	181	62-77	SEAMON
3827-006	HEANER INCORPORATED	100.00	181	62-78	SEAMON
3827-007	HEANER INCORPORATED	100.00	181	62-79	SEAMON
3827-008	HEANER INCORPORATED	100.00	181	62-80	SEAMON
3827-009	HEANER INCORPORATED	100.00	181	62-81	SEAMON
3827-010	HEANER INCORPORATED	100.00	181	62-82	SEAMON
3827-011	HEANER INCORPORATED	100.00	181	62-83	SEAMON
3827-012	HEANER INCORPORATED	100.00	181	62-84	SEAMON
3827-013	HEANER INCORPORATED	100.00	181	62-85	SEAMON
3827-014	HEANER INCORPORATED	100.00	181	62-86	SEAMON
3827-015	HEANER INCORPORATED	100.00	181	62-87	SEAMON
3827-016	HEANER INCORPORATED	100.00	181	62-88	SEAMON
3827-017	HEANER INCORPORATED	100.00	181	62-89	SEAMON
3827-018	HEANER INCORPORATED	100.00	181	62-90	SEAMON
3827-019	HEANER INCORPORATED	100.00	181	62-91	SEAMON
3827-020	HEANER INCORPORATED	100.00	181	62-92	SEAMON
3827-021	HEANER INCORPORATED	100.00	181	62-93	SEAMON
3827-022	HEANER INCORPORATED	100.00	181	62-94	SEAMON
3827-023	HEANER INCORPORATED	100.00	181	62-95	SEAMON
3827-024	HEANER INCORPORATED	100.00	181	62-96	SEAMON
3827-025	HEANER INCORPORATED	100.00	181	62-97	SEAMON
3827-026	HEANER INCORPORATED	100.00	181	62-98	SEAMON
3827-027	HEANER INCORPORATED	100.00	181	62-99	SEAMON
3827-028	HEANER INCORPORATED	100.00	181	62-100	SEAMON

- NOTES:
- NO ABSTRACT OF TITLE, NOR TITLE COMMITMENT, OR RESULTS OF ANY SEARCHES OR RECORDS REVIEWED ARE NOTED HEREON. THESE DOCUMENTS OF RECORD REVEALS ARE NOTED HEREON, THESE ARE SUBJECT TO THE RECORDS OF THE SOUTH CAROLINA ARCHIVES.
 - CERTIFICATION IS MADE TO THOSE PERSONS FOR WHICH THIS PLAT IS MADE THAT THE INFORMATION CONTAINED HEREON IS A TRUE AND ACCURATE REPRESENTATION OF THE FACTS AND DATA RECEIVED BY HEANER INCORPORATED.
 - THIS PLAT DOES NOT RESERVE ANY WEILANDS OR HAZARDOUS WASTE AREAS.
 - ALL EXISTING PROCEEDINGS MUST BE LIFTED BY A UTILITY EASEMENT AGREEMENT.
 - EACH SIDE IN ADDITION TO THOSE SHOWN.
 - OTHERWISE INDICATED BY REBAR/CAP SET.
 - ALL LOTS SUBJECT TO EXISTING EASEMENTS SHOWN OR NOT.

ROAD LINE TABLE

CURVE	RADIUS	LENGTH	CHORD	BEARING
R1	50.00	50.00	50.00	N00°00'00"W
R2	50.00	50.00	50.00	N00°00'00"W
R3	50.00	50.00	50.00	N00°00'00"W
R4	50.00	50.00	50.00	N00°00'00"W
R5	50.00	50.00	50.00	N00°00'00"W
R6	50.00	50.00	50.00	N00°00'00"W
R7	50.00	50.00	50.00	N00°00'00"W
R8	50.00	50.00	50.00	N00°00'00"W
R9	50.00	50.00	50.00	N00°00'00"W
R10	50.00	50.00	50.00	N00°00'00"W
R11	50.00	50.00	50.00	N00°00'00"W
R12	50.00	50.00	50.00	N00°00'00"W
R13	50.00	50.00	50.00	N00°00'00"W

ROAD CURVE TABLE

CURVE	RADIUS	LENGTH	CHORD	BEARING
R1	50.00	50.00	50.00	N00°00'00"W
R2	50.00	50.00	50.00	N00°00'00"W
R3	50.00	50.00	50.00	N00°00'00"W
R4	50.00	50.00	50.00	N00°00'00"W
R5	50.00	50.00	50.00	N00°00'00"W
R6	50.00	50.00	50.00	N00°00'00"W
R7	50.00	50.00	50.00	N00°00'00"W
R8	50.00	50.00	50.00	N00°00'00"W
R9	50.00	50.00	50.00	N00°00'00"W
R10	50.00	50.00	50.00	N00°00'00"W
R11	50.00	50.00	50.00	N00°00'00"W
R12	50.00	50.00	50.00	N00°00'00"W
R13	50.00	50.00	50.00	N00°00'00"W

I hereby certify that I am a duly licensed Professional Engineer in the State of South Carolina, and that I am the author of the foregoing drawings, and that they are a true and correct representation of the facts and data received by me.

Greenwood County
Planning Department
The Planning Department
By: [Signature]
Planning Director

HEANER INCORPORATED
GREENWOOD COUNTY
DATE: 3/9/07